

USB Driver Installation Guide



This installation guide is for the following operating systems: Windows 98 (Including SR2), Windows Millennium Me, Windows 2000 *, Windows XP Home* / Professional*, Windows Vista*. It is generally not necessary to install this driver if you install FlyChart 4.52.33 or later as it is part of the FlyChart installer package.

*Installation under these operating systems requires administrator rights. If you are unsure which rights you actually have, please ask your system administrator or a PC service provider.

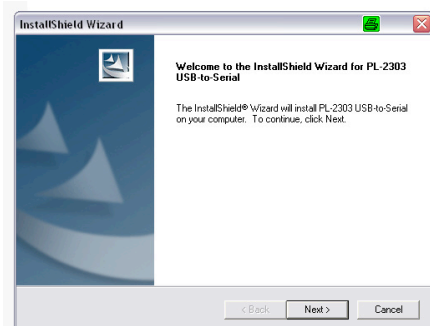
Important: Do not connect the flight instrument to the computer until you have finished Step 1 and 2 of this software installation guide!

Step 1 Obtain USB driver software

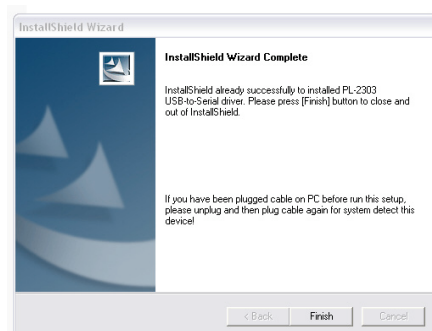
The USB driver can be downloaded at www.flytec.com/Products/Software/FlyChart_452.htm. When you click on the download link save the file to a specified location. When the download is complete browse to download location and extract the downloaded .zip file for use in the next step.

Step 2 Install FlyChart

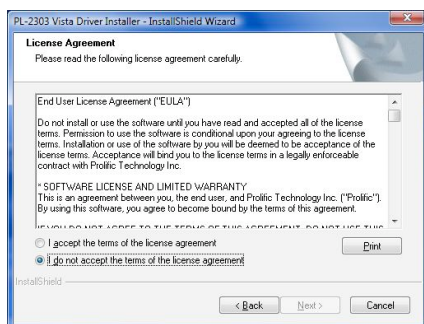
1. Verify that no flight instrument and no USB serial adapter is connected to the PC.
2. Double click the PL-2303 Driver installer.exe



3. Click on **Next**



5. Successful driver installation. Click **Finish**.



4. Read, select "I accept..." and click **Next**

6. You can now connect your Flytec instrument with the provided USB cable and connect to your desired compatible PC software package or Flytec flasher utility. Be sure to select "Prolific USB-to-serial Comm Port" for the port selection in program that you are using.

Troubleshooting Port Connection

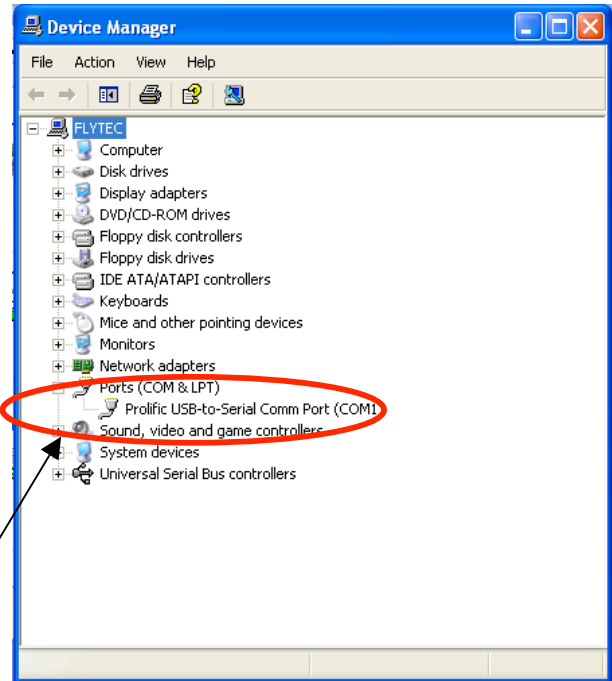
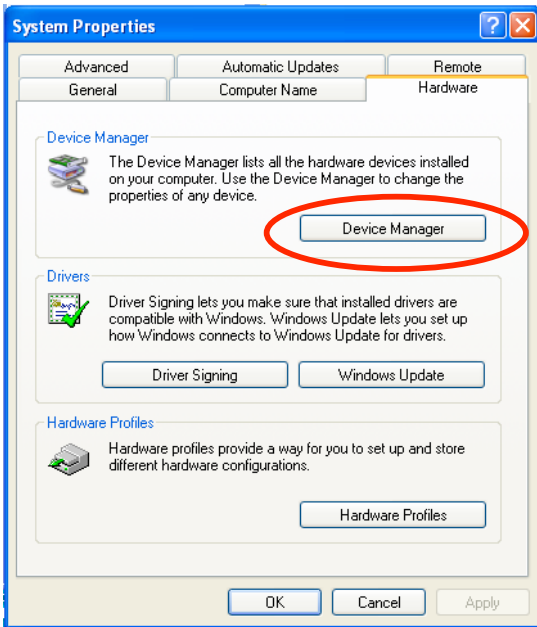
If FlyChart or compatible third party software (e.g., SeeYou, CompeGPS, etc.) does not list the Prolific USB to Serial adapter/driver it could be that another device is reserving it or using the available ports. Bluetooth devices can reserve several of the available COM ports. In this case, it is possible that the Prolific driver

USB Driver Installation Guide

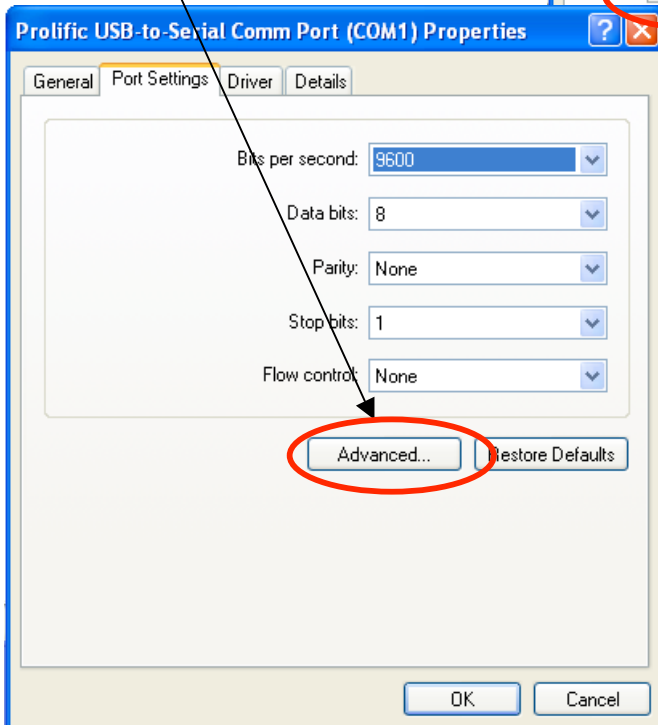
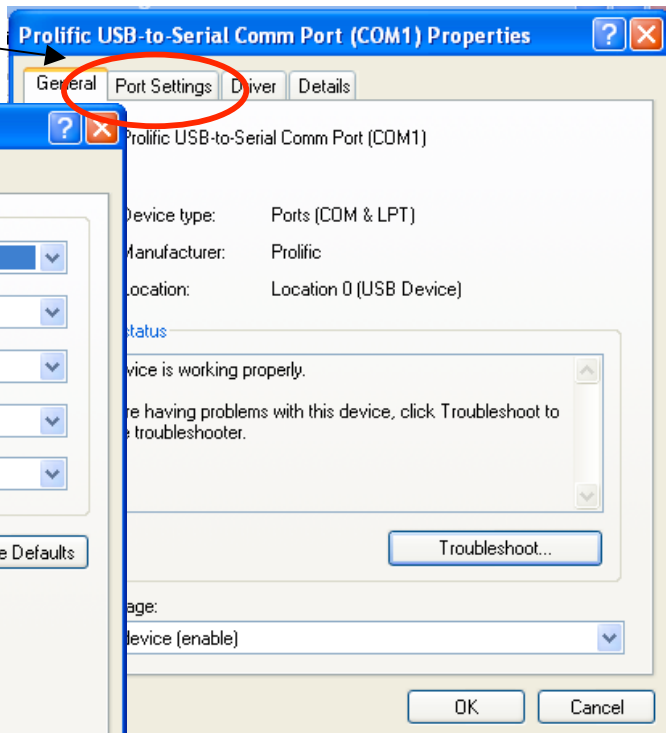


cannot find a free COM port and it tries to share a COM port with the other device. If this occurs it will be necessary to map the Prolific driver to a free port.

1. Connect the Flytec instrument to the PC with the supplied USB cable.
2. Open *Windows Control Panel > System > System Properties > Hardware* tab.
3. Click the *Device Manager* button.



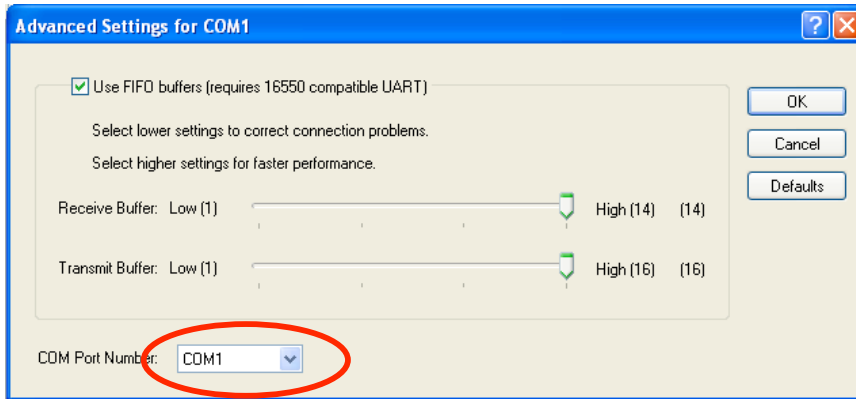
3. Expand *Ports (COM & LPT)*. You should see a list with the available COM ports. One of them should be the Prolific USB Driver.
4. Right-click *Prolific USB-to Serial Comm Port* and select *Properties*
5. Click *Port Settings* tab
6. Click the advanced button



USB Driver Installation Guide



7. Click on the *COM Port Number* pull-down and select the lowest number COM port that is not in use. If a COM port that is marked as “In use” is selected conflicts with other programs are likely.



8. Click OK and return to your compatible PC software package or Flytec flasher utility. Be sure to select the COM port that you selected in step 7 as the port selection in program that you are using.