

# FlyChart Quick Start

**Flytec AG**  
Electronic flight instruments  
Ebenastrasse 18, CH-6048 Horw  
Switzerland  
fon +41 41 349 18 88  
fax +41 41 349 18 99  
www.flytec.ch  
info@flytec.ch

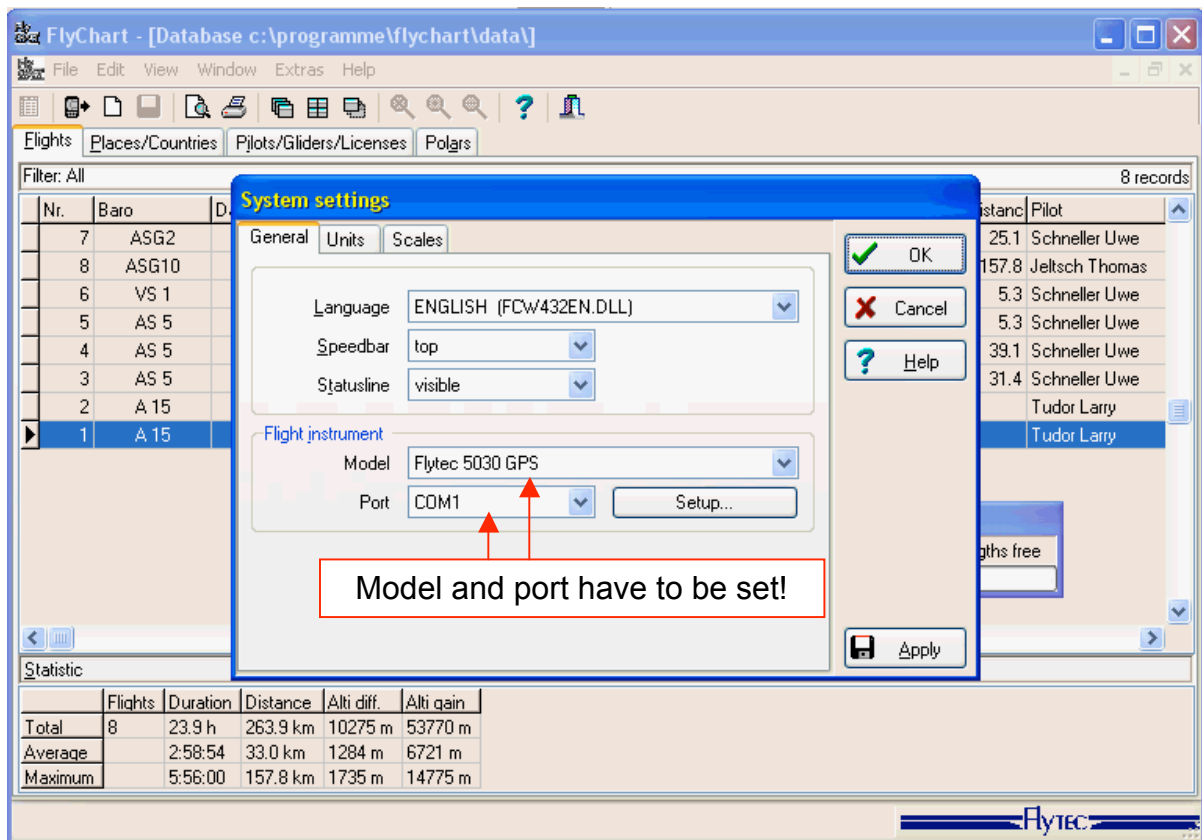
## 1- Installation:

Insert the FlyChart CD. If no window opens, open the CD-directory. The installation file is D:\FLYCHART 4.32\Flytec Full\ . Start the installation by double-clicking on fc432-26\_(x).exe. The assistant will lead you through the installation.

In event of an error message during installation, or incomplete installation, delete the Fcw432.exe in the FlyChart-Sys-Folder (C:\Programme\FlyChart\Sys) to force the installer to make a new installation.

## 2- System settings:

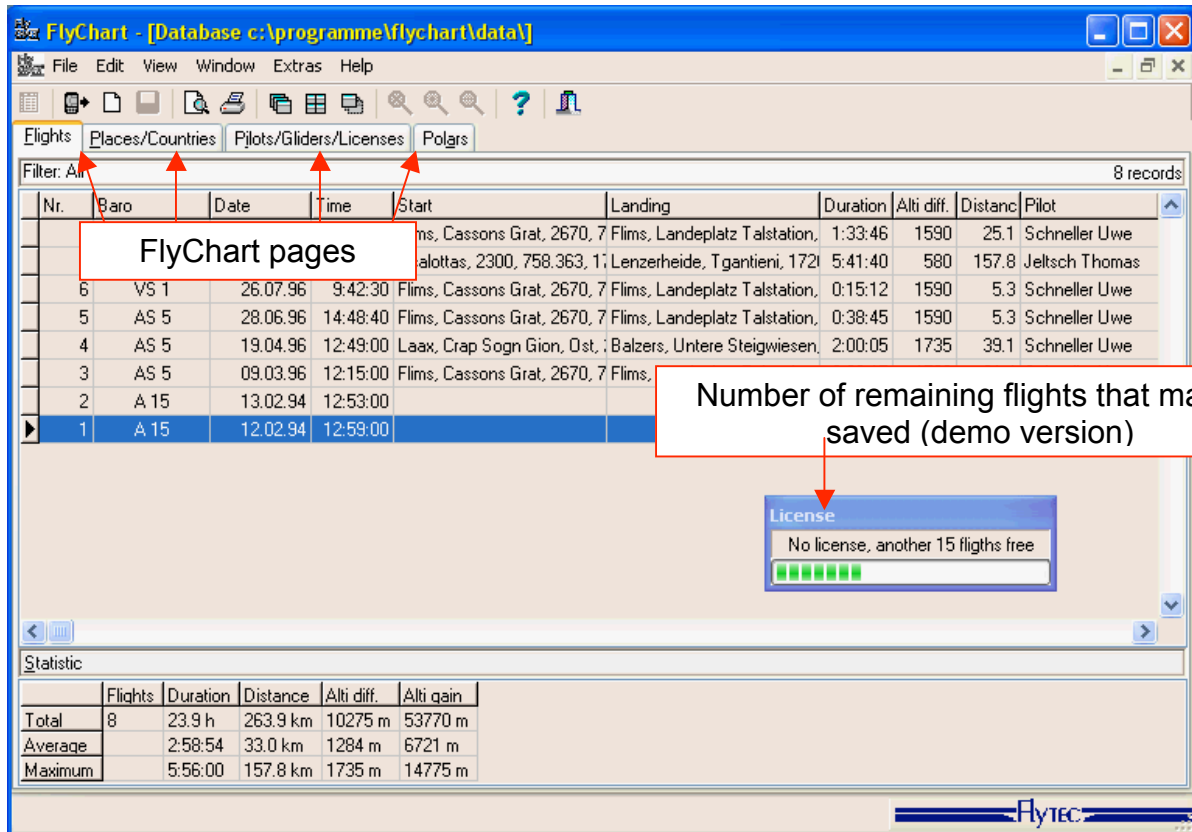
You can alter FlyChart settings in the Extras menu→ System Settings. If it was necessary to change the language, close FlyChart and restart it for the change to apply. Be sure to set the flight instrument model and COM port, otherwise communication between the instrument and FlyChart will not be possible. For best results leave the scales on automatic.



System setting window

## 3- Getting started with FlyChart:

When FlyChart is started, it opens the main database page (Flights), the directory path is shown in header. There are three other pages: Places/Countries, Pilots/Gliders/Licenses and Polars. These pages may be accessed by clicking on the relevant tab just below the tool bar, however, the polar page may only be accessed with the professional software license.

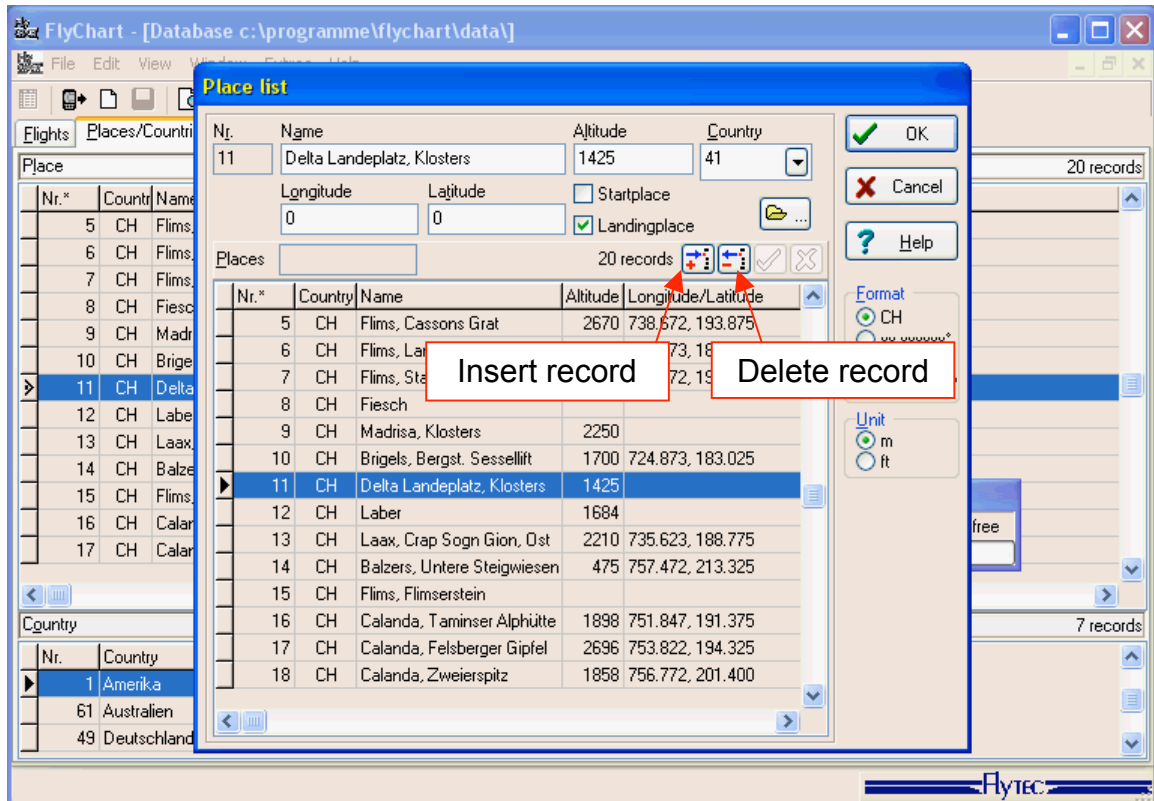


Star-up window

The Flights page displays a listing of the saved flight records. Without a valid software license entered, FlyChart will function as a demo version where a maximum of 15 flights can be saved. The *License* box will be present if you have not entered your software license and how many more flight records may be saved will be shown in the box. There are two license types available, standard and professional. With the standard license, there is no limit to the number of saved flights and with the professional license it possible to use the polar and import/export functions in addition to all the standard features.

To add a new record to one of the lists, double-click in the list and a new window will open where you can create, delete, or edit a record. If you double-click a flight record in the *Flights List* a flight detail window will appear. Within the flight detail window you can click on the Barogram tab to view a graphical display of the flight.

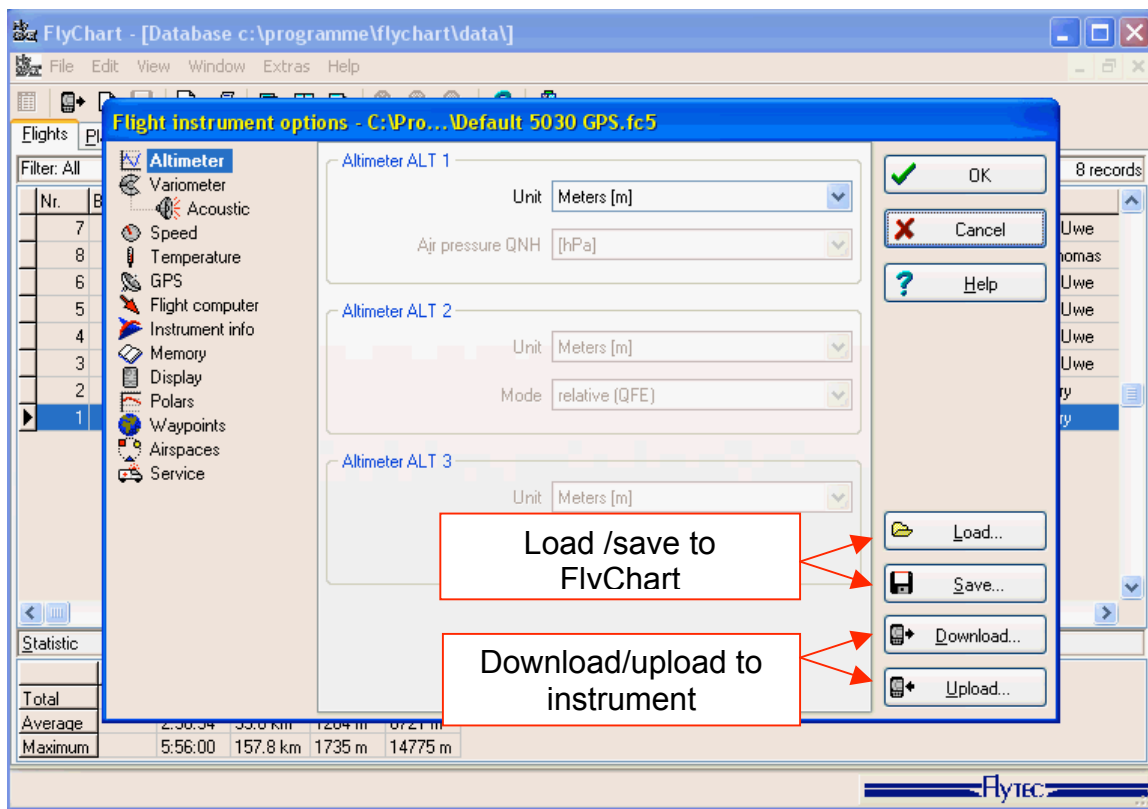
The various lists in FlyChart can be sorted and customized in the View menu → Sorting. You can choose how to sort the list and which details you want displayed.



*Place List*

## 4- Instrument settings:

You may customize your 4000/5000 series instrument with FlyChart in the Extras menu → Flight instrument options. Edited settings will be highlighted pink. Once the desired settings are selected they may be uploaded to the instrument by clicking the upload button. It is also possible to download the settings from an instrument and save it to FlyChart for future use.



*Flight instrument options window*

The waypoint data format is:

<WPID>= <NAME>, <LONGITUDE>[+-DDD.DDDDDD], <LATITUDE>[+-DD.DDDDDD], <ALTITUDE>[m]

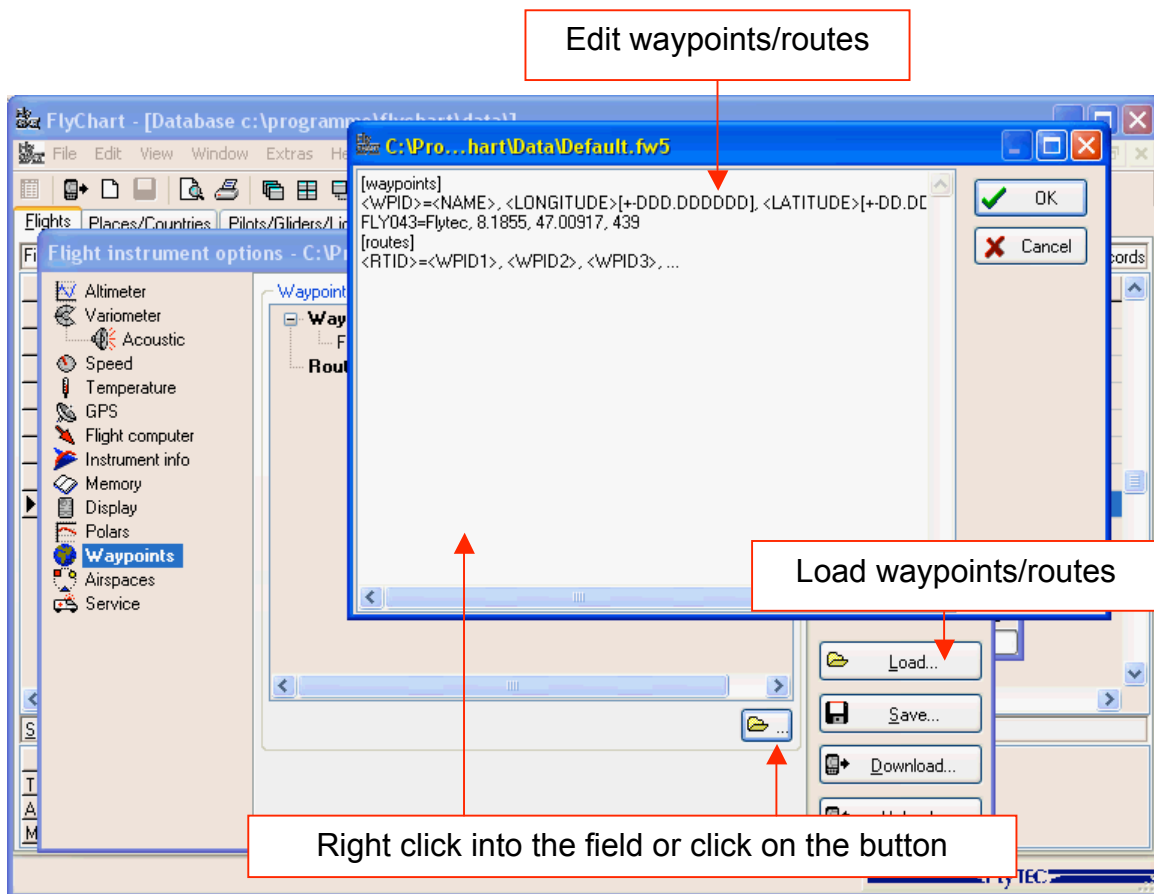
The Waypoint ID (<WPID>) will be created automatically when the window is closed

The route data format is:

<RTID>= <WPID1>, <WPID2>, <WPID3>, ...

The Route ID (<RTID>) will be created automatically when the window is closed.

To create a route from new waypoints close the window and reopen it. This allows the computer to set the Waypoint IDs for the new waypoints



*Waypoint/route window*

For more help you can use the following help sources:

- F1: A context sensitive help
- Help menu → Help (F1): Help text for the active window
- Help menu → Program Description: A more detailed introduction
- Help menu → Contents: The table of contents for help topics
- Help menu → Topic search: The Windows help system with help contents and index.
- The FAQ site on [www.flytec.ch](http://www.flytec.ch)