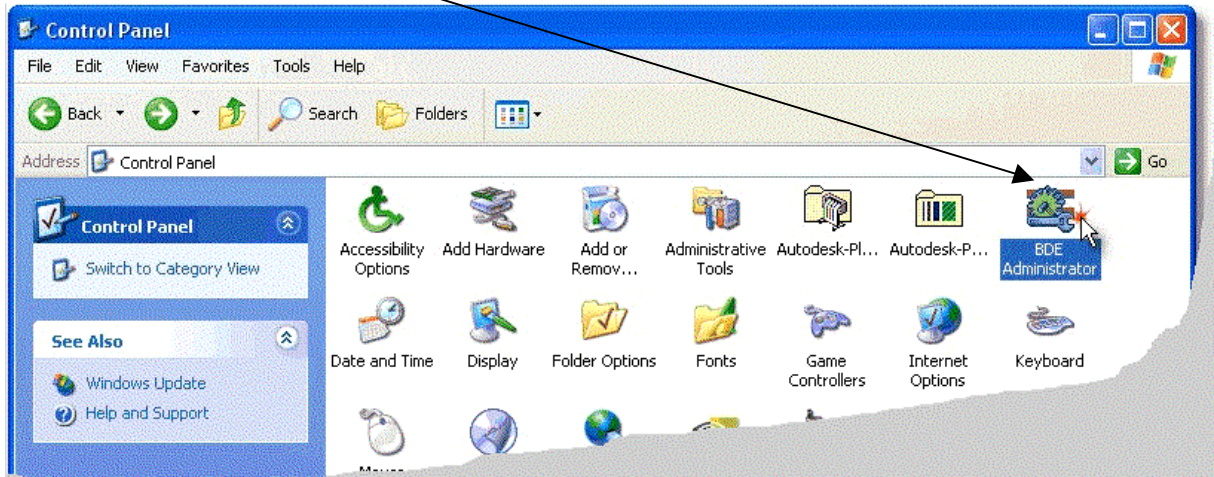


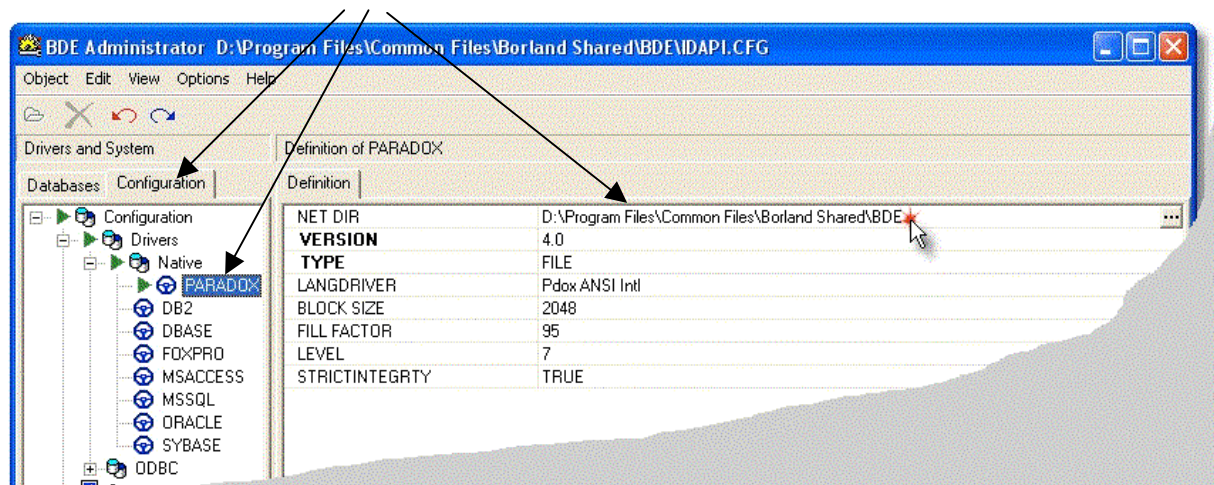
FlyChart Installation for Windows XP and VISTA Login as Limited User

26.03.2007 PJ

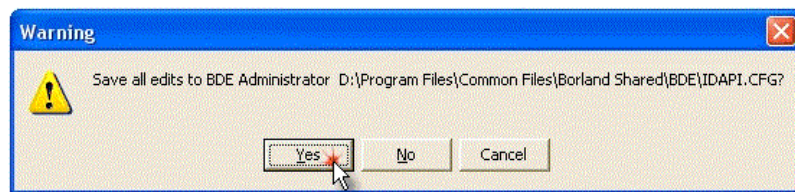
1. Login as Administrator
2. Install FlyChart (flychart 4.5x.exe)
3. After FlyChart installation is complete open Control Panel and start BDE Administrator



4. Set Paradox NET DIR to a Directory with all User rights



5. Save and close BDE Administrator



6. Log in with your user name and start FlyChart.